

Research Collaborations in the Social Sciences

DUSTIN AVENT-HOLT, DIRECTOR CENTER FOR SOCIAL SCIENCE RESEARCH

MELISSA POWELL-WILLIAMS, DIRECTOR QUALITATIVE RESEARCH LAB



Pamplin College of Arts, Humanities, and Social Sciences

7 Departments

- Psychological Sciences
- English and World Languages
- History, Anthropology, and Philosophy
- Social Sciences
- Communication
- Art & Design
- Music

Center for Social Science Research



Overview CSSR

Pamplin College of Arts, Humanities, and Social Sciences

Intellectual Community

- Working Ideas Brown Bags
- Social Science for the Common Good Lecture
- Joint Coffee Hours

Research Infrastructure

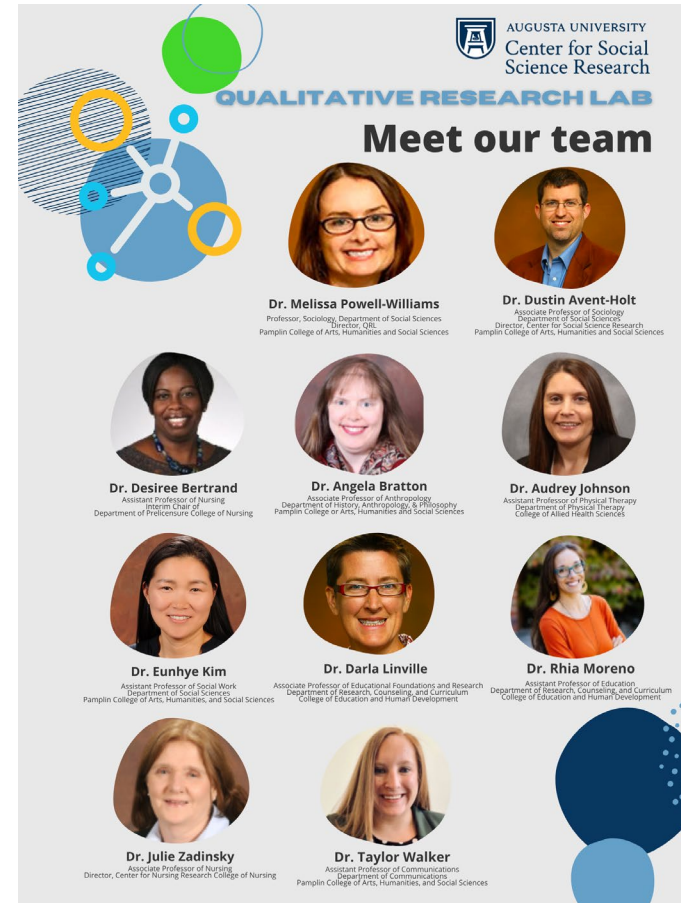
- Faculty Affiliates
- Qualitative Research Lab

Qualitative Research (Lab) Core

We assist in the development and implementation of qualitative research. from the initial design of research protocols to implementation of protocols to data analysis.

We serve AU faculty, graduate students, and administrators.

Common services include consultation on research design, conducting interviews, focus groups, ethnographic field-work and participant observation and data analysis



The graphic features a central title 'Meet our team' under the 'QUALITATIVE RESEARCH LAB' header. It includes the August University logo and 'Center for Social Science Research'. The team is presented in a grid of circular portraits, each with a name and title. The background is light gray with decorative blue and green circles and a network diagram on the left.

AUGUSTA UNIVERSITY
Center for Social Science Research

QUALITATIVE RESEARCH LAB

Meet our team

Dr. Melissa Powell-Williams
Professor, Sociology, Department of Social Sciences
Director, QR
Pamplin College of Arts, Humanities and Social Sciences

Dr. Dustin Avent-Holt
Associate Professor of Sociology
Department of Social Sciences
Director, Center for Social Science Research
Pamplin College of Arts, Humanities and Social Sciences

Dr. Desiree Bertrand
Assistant Professor of Nursing
Department of Nursing
Pamplin College of Arts, Humanities and Social Sciences

Dr. Angela Bratton
Associate Professor of Anthropology
Department of History, Anthropology, & Philosophy
Pamplin College of Arts, Humanities and Social Sciences

Dr. Audrey Johnson
Assistant Professor of Physical Therapy
Department of Physical Therapy
College of Allied Health Sciences

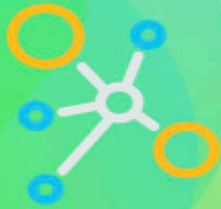
Dr. Eunhye Kim
Assistant Professor of Social Work
Department of Social Sciences
Pamplin College of Arts, Humanities, and Social Sciences

Dr. Darla Linville
Associate Professor of Educational Foundations and Research
Department of Research, Counseling, and Curriculum
College of Education and Human Development

Dr. Rhia Moreno
Assistant Professor of Education
Department of Research, Counseling, and Curriculum
College of Education and Human Development

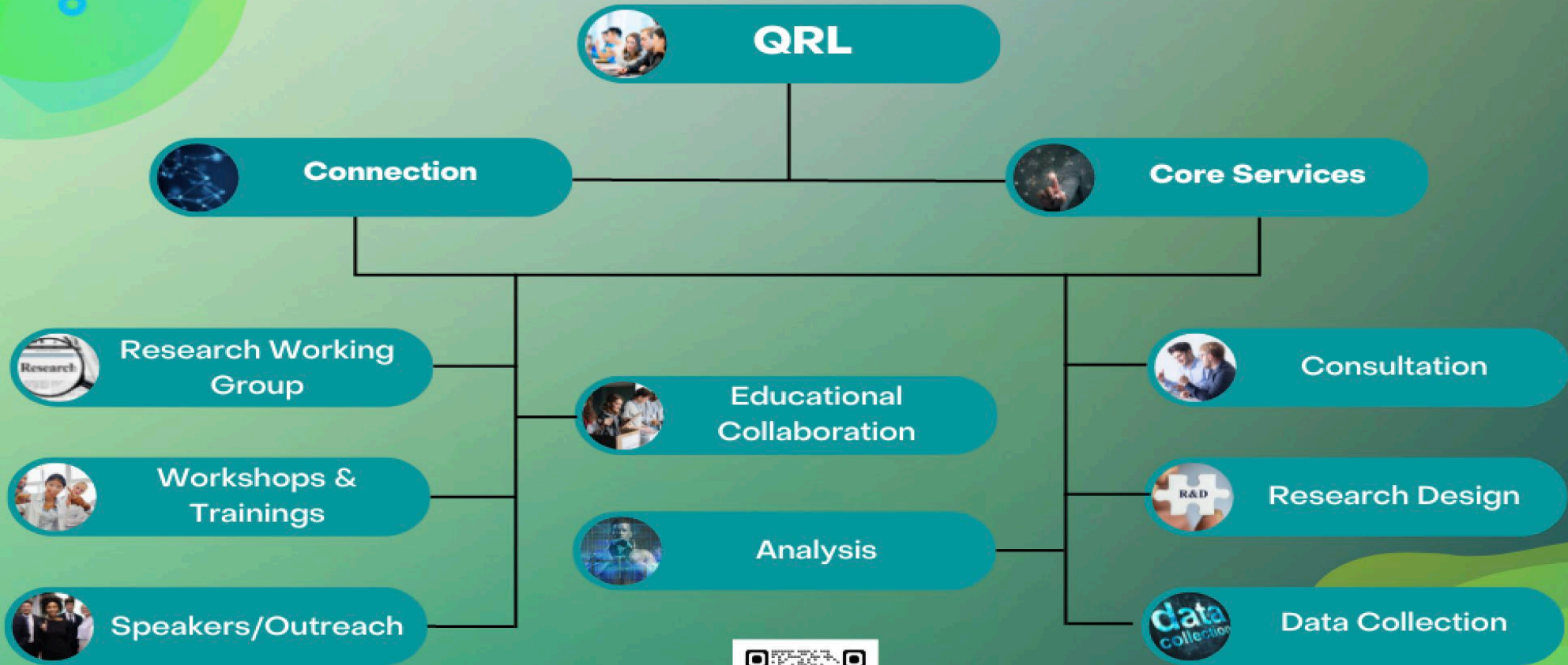
Dr. Julie Zadinsky
Associate Professor of Nursing
Director, Center for Nursing Research
College of Nursing

Dr. Taylor Walker
Assistant Professor of Communications
Department of Communications
Pamplin College of Arts, Humanities, and Social Sciences



QUALITATIVE RESEARCH LAB

What We Do



AUGUSTA UNIVERSITY
Center for Social
Science Research

www.augusta.edu/pamplin/cssr/qualitative-research.php

Qualitative Core Services

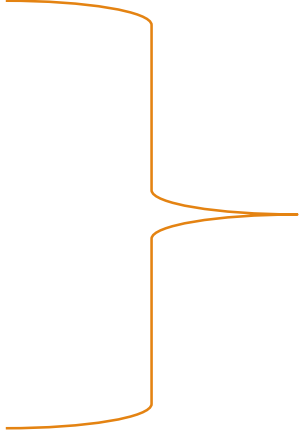
Consultation on research design

Conducting focus groups

Creating interview guides

Interviewing participants

Data analysis



- Free one hour consultation
- \$120/hr

Host Trainings and Workshops

<https://www.augusta.edu/pamplin/cssr/qr/>

Recent Examples from the QRL

Project	Objectives	QRL Contribution
Pediatrics Pathway Program Dr. April Hartman	Program evaluation assessing the efficacy of PPP on student readiness and comfort when interacting in the simulated medical context, identify ways to strengthen the program, and assess how the middle school students perceive the experience impacted their view on medicine careers.	Research Design Focus Groups Data Analysis
<i>Exploring Maternal and Child Health Through Systematic Braiding</i> Dr. Ashwini Tiwari	Pilot test acceptability and feasibility of the systematic braiding method to create a novel curriculum integrating breastfeeding peer support education program with SafeCare, among key informants including providers and target mothers.	Design Consultation Training
<i>Are Health Benefits of School Based Moderate to Vigorous Physical Activity Interventions in Childhood Carried Forward into Young Adulthood</i> Dr. Yanbin Dong	To pilot-test the hypothesis that the childhood MVPA training group as compared to the control group will show favorable PA-related knowledge, attitudes, behaviors, skills, perceptions, intention, willingness, determination, capability and enjoyment, self-efficacy, social-economic status, education levels, and career development and mental health in young adults	Research Design Focus Groups Analysis

Discussion

Where can public health and social sciences connect?

Dustin Avent-Holt, daventh@augusta.edu

Melissa Powell-Williams, mpwilliams@augusta.edu

Center for Social Science Research, cssr@augusta.edu