

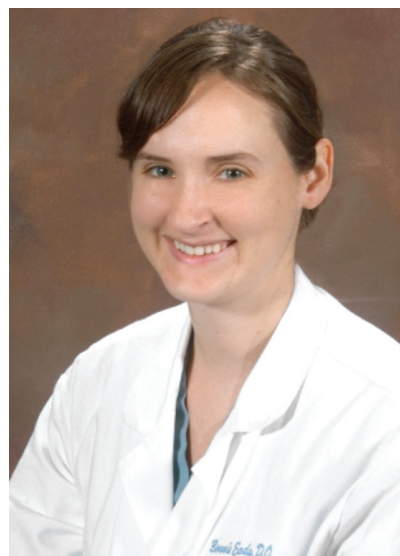
# 29<sup>th</sup> Annual

## Resident Research Symposium

for the Department of Obstetrics and Gynecology



**Stephen Bush, MD**  
Chief Resident



**Bonnie Eady, DO**  
Chief Resident



**Laura Gibbs, MD**  
Chief Resident



**Tondra Newman, MD**  
Chief Resident

**Friday, June 15, 2012      9 a.m.– 4:30 p.m.**  
**Lee Auditorium – Georgia Health Sciences University**

### **The Future of Intrapartum Care: Navigating through the Perfect Storm—An Obstetrician's Odyssey**

**GUEST SPEAKER: Lawrence D. Devoe, MD, Professor Emeritus**



Dr. Devoe joined the MCG Obstetrics and Gynecology faculty in 1983 as an Associate Professor and was the Director of Maternal-Fetal Medicine from 1984-2005. He became a tenured Professor in 1989 and served as Brooks Professor and Department Chair from 1995-2006, retiring in 2010 as Professor Emeritus. Dr. Devoe received his MD from the University of Chicago Pritzker School of Medicine. He completed his internship, residency, and a fellowship in maternal-fetal medicine at the University of Chicago, Chicago Lying-In Hospitals and Clinics. He is a Fellow of the American College of Obstetrics and Gynecology, and holds active membership in several professional societies. He is Past President of the South Atlantic Association of Obstetricians and Gynecologists, has been a board member of the Society for Maternal Fetal Medicine, and has been past president of the Southern Perinatal

Association and Georgia Perinatal Association. Dr. Devoe has been a member of the NIH Special Study Group on Fetal Behavior and the NIH Study Section for SBIR and Technology Transfer. He is a reviewer for the FDA orphan drug section and has been a senior examiner for the American Board of Obstetrics and Gynecology. Dr. Devoe has authored more than 200 scientific articles, abstracts and book chapters. His research interests include computer applications in fetal monitoring, intrapartum and antepartum fetal assessment and labor induction. Currently, Dr. Devoe is a part-time faculty member in the Section of Maternal-Fetal Medicine.



**Georgia Health  
Sciences University**

**For more information, contact Kathy Kline, 706 • 721 • 2541**