



MCG MEDICAL EDUCATOR MINUTE

#7

Overview of MCG's Undergraduate Medical Education Curriculum

BACKGROUND

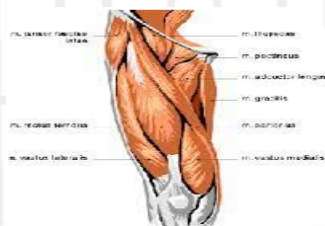
The Medical College of Georgia is comprised of a four-year campus located in Augusta, a four-year campus in Athens (established in partnership with UGA) and three clinical campuses (i.e., years three and four) located in the Southwest, Southeast, and Northwest areas of Georgia. The first two years of MCG's curriculum is primarily focused on foundational sciences (e.g., anatomy, physiology, pharmacology), and the last two years are primarily for clinical training. Additional courses in years one and two include essentials of clinical medicine, the art of doctoring, physical diagnosis, and problem-based learning.

Students often engage in research between their first and second years. They typically take the USMLE Step 1 exam at the end of their second year, and USMLE Step 2 and Step 2 CS (clinical skills) near end of their third year. They typically start residency interviews midway into their fourth year.

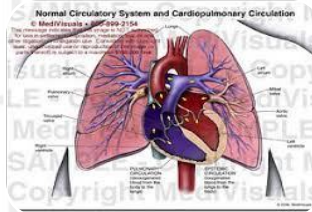
Year 1



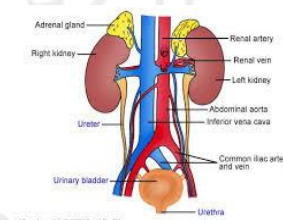
Cellular and Molecular Basis of Medicine



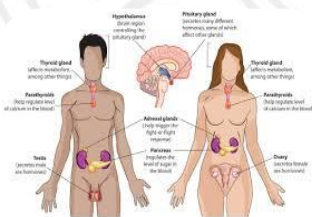
Tissue/Musculoskeletal



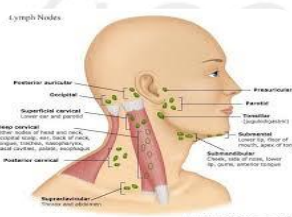
Cardiopulmonary



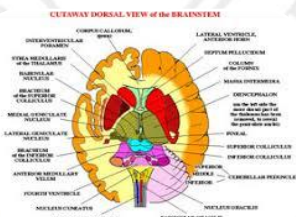
GI/Urinary



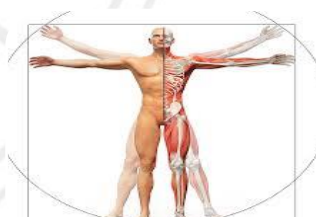
Endo/Repro



Head/Neck and Special Senses

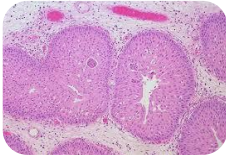


Neuroscience



Comprehensive

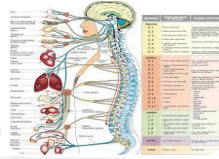
Year 2



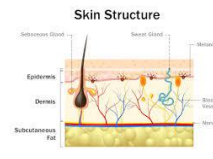
Fundamentals



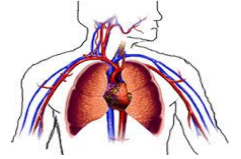
Heme/ GI



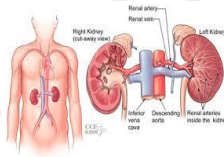
Central Nervous System



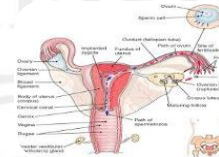
Musculoskeletal/Skin



Cardiopulmonary



Renal



Endo/Repro



Comprehensive

Year 3



Elective
4 weeks



Family Medicine
6 weeks



Palliative Care



Pediatrics
6 weeks



OB/GYN
6 weeks



Neurology
4 weeks



Psychiatry
4 weeks



Surgery
4 weeks general,
4 weeks specialty



Internal Medicine
8 weeks

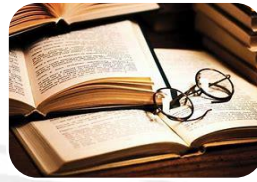
Year 4



Elective



Emergency
Medicine



Study



Sub-Internship



Away Elective



Ambulatory



Medical ICU



Elective

Athens campus - Year 1 (sample week)

Monday	Tuesday	Wednesday	Thursday	Friday
Small Group	Essentials of Clinical Medicine	Small Group	Essentials of Clinical Medicine	Small Group
Large Group	Large Group	Large Group		
				Weekly Assessment
Community Health	Anatomy Lab/ Clinical Skills		Clinical Skills/ Anatomy Lab	Quiz Review

WANT MORE?

MCG Curriculum Office - <https://www.augusta.edu/mcg/coffice/>

AU/UGA Medical Partnership - <http://medicalpartnership.usg.edu/education/curriculum>